



Installation & Maintenance Manual

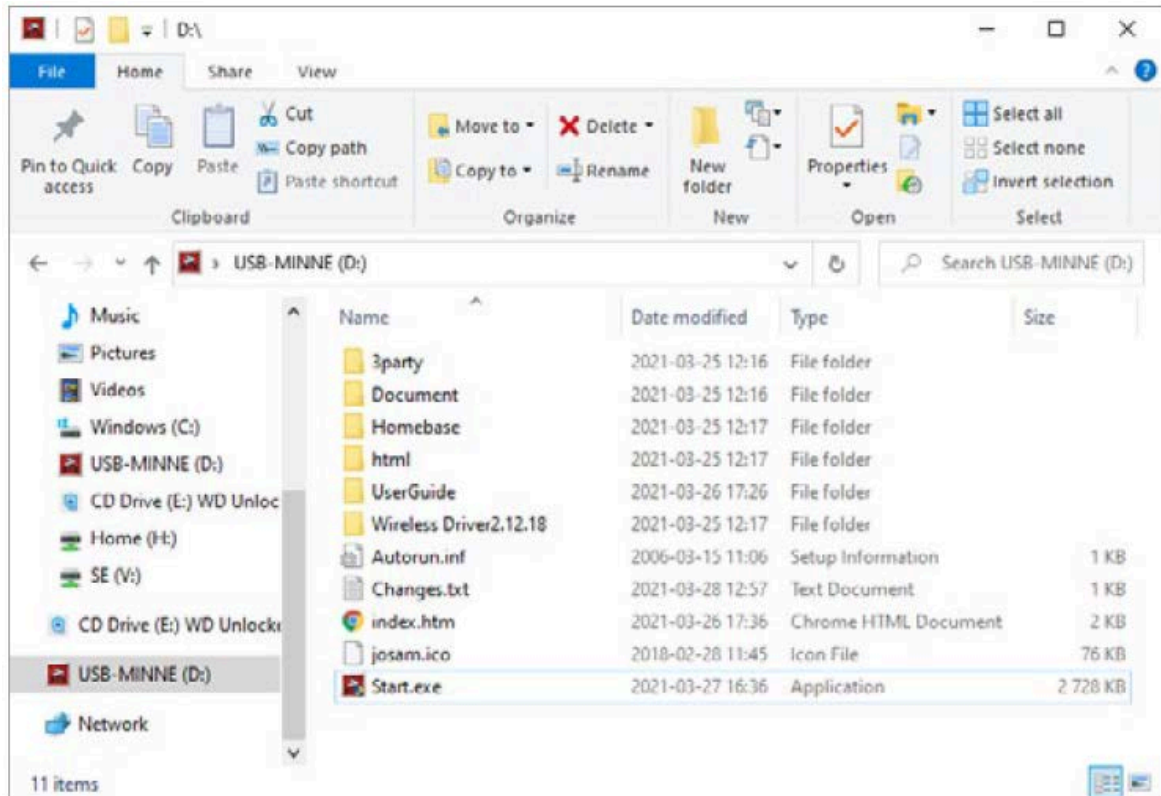
Homebase 4 – Software installation guide

Contents

1 Software installation.....	3
2 Installation of wireless server.....	8
3 Choosing Bluetooth device.....	10

1 Software installation

1.



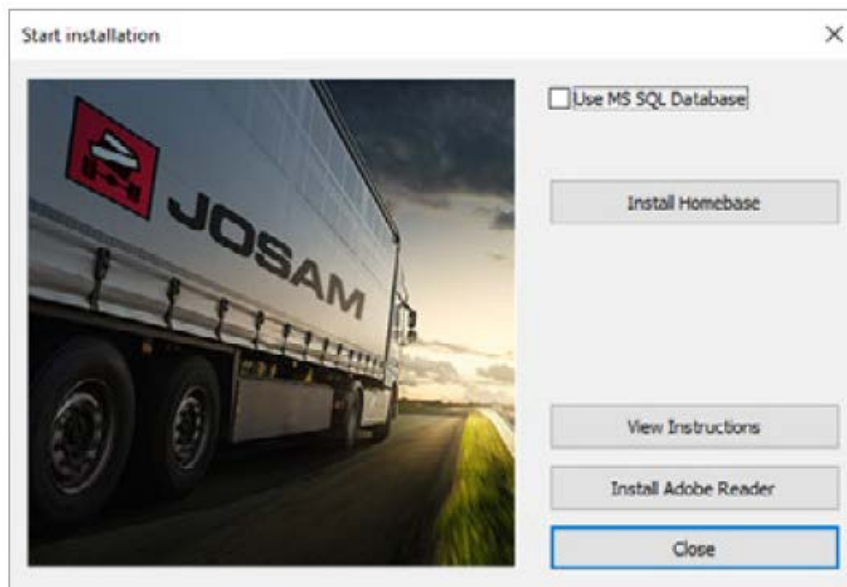
Locate the installation media and double click '**Start**'.

Note: if you downloaded the software, make sure you extract all files first. Extract the files to a folder in the root directory, e.g. C:\Downloads, and not to the Windows desktop.

2.

When started, you will see one of the installation screens shown in steps 3 and 4. The screen shown depends on whether a previous Homebase version is installed or not.

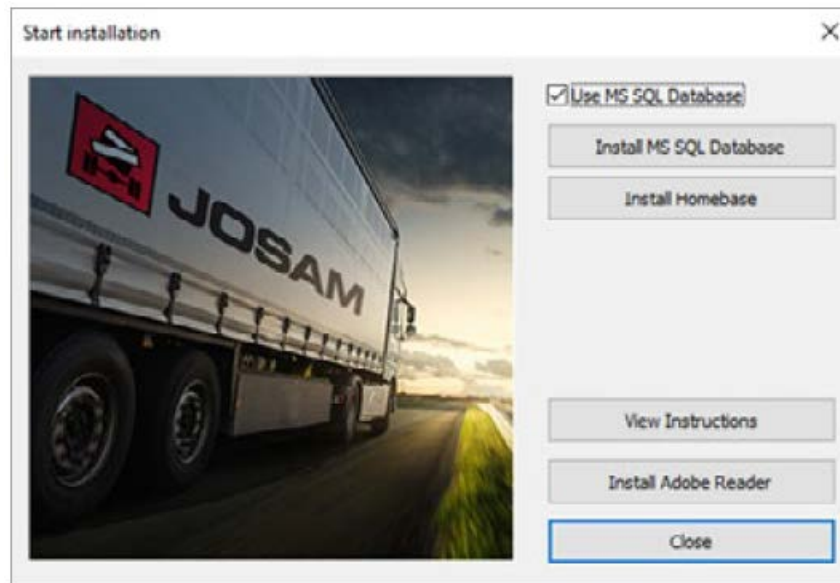
3.



To install Homebase using a local database: Click [**Install homebase**]. Then continue to **step 6**.

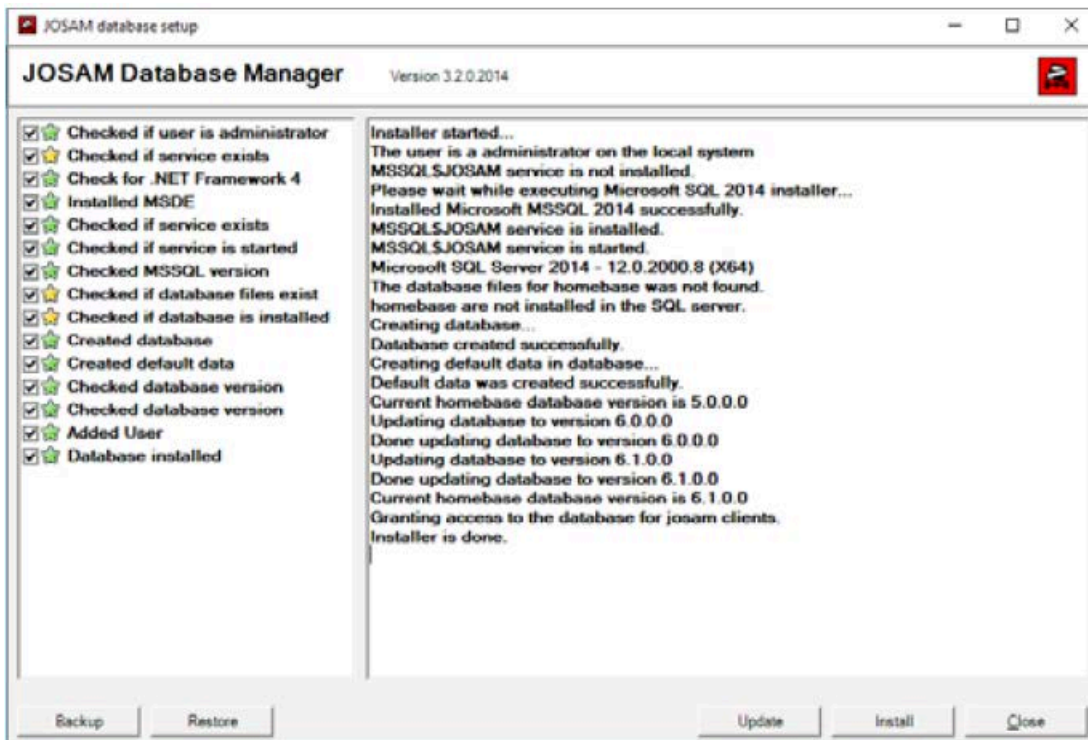
Note: This is the typical installation, which stores measurements on the current computer. If measurements need to be stored in a Microsoft SQL database, see the user manual for detailed installation instructions.

4.



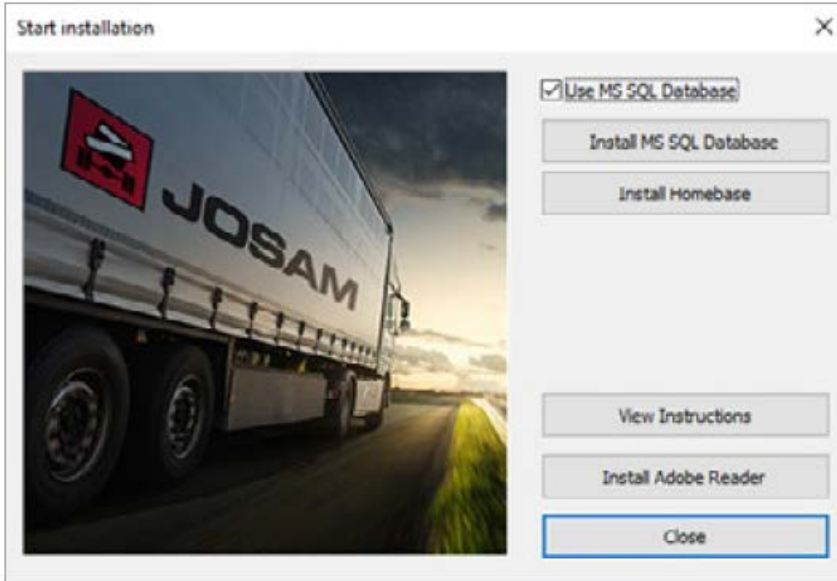
To install Homebase using an external (Microsoft SQL) database: Click **[Install database]**. Then continue to **step 5**.

5.



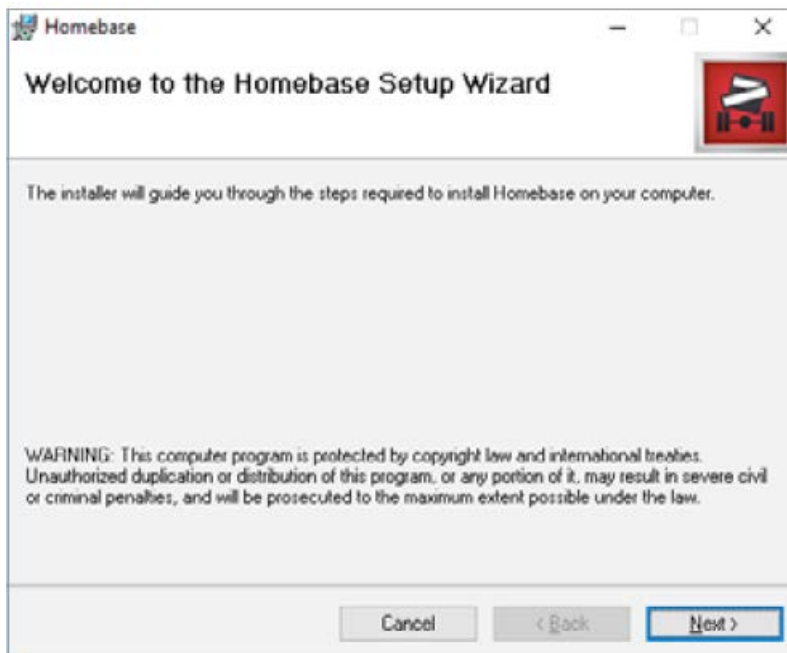
Wait for the database installer to finish and then click **[Close]**.

6.



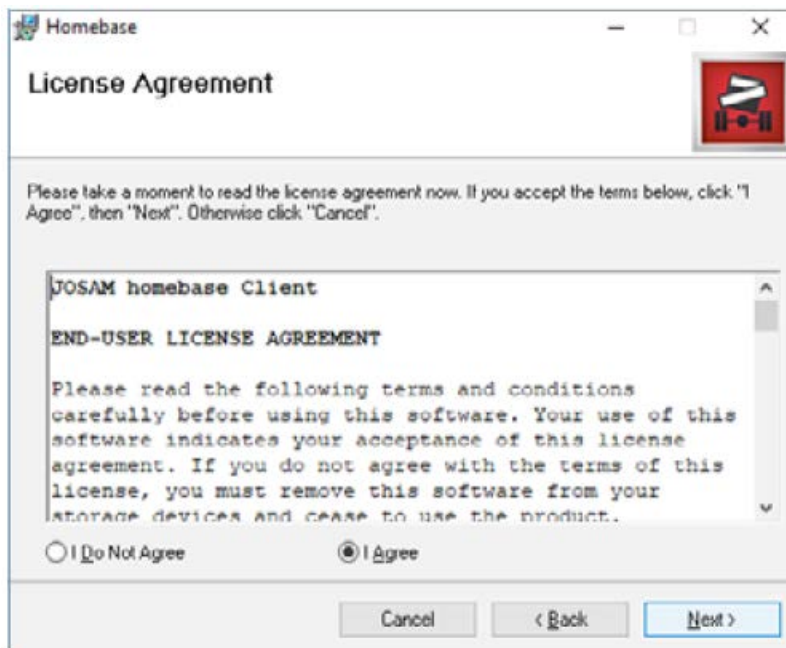
Return to the main window and click **[Install homebase]**.

7.



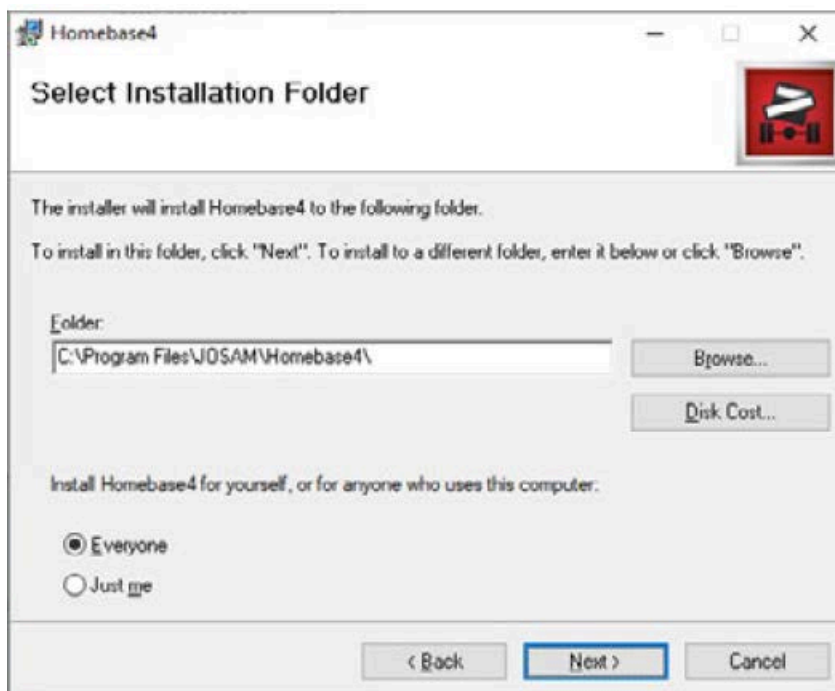
Click **[Next]**.

8.

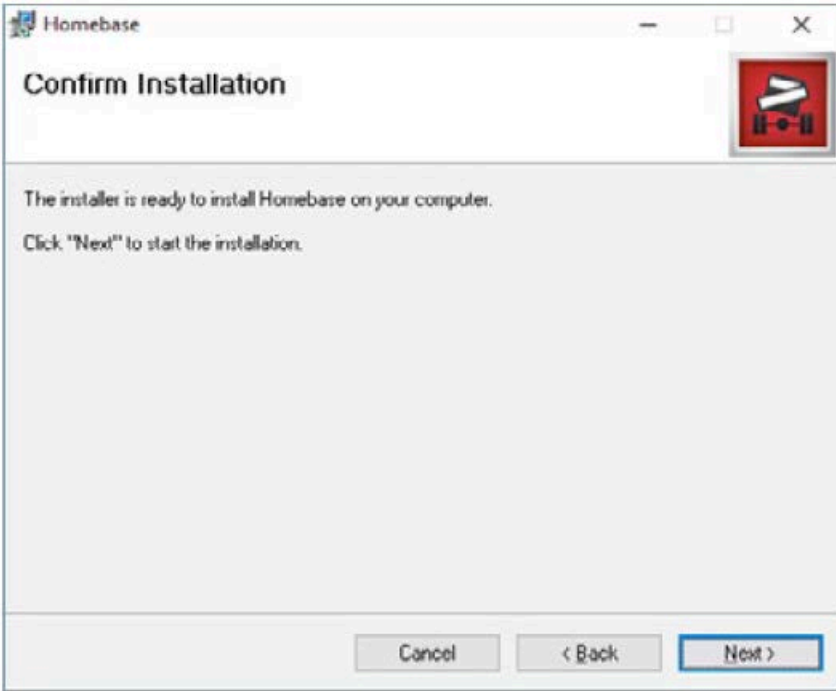
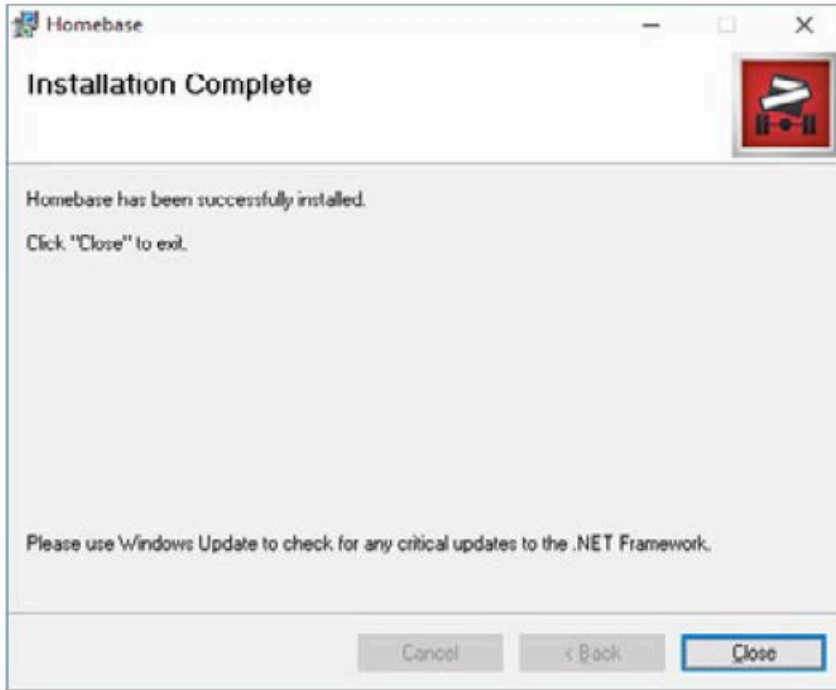


Read the license agreement, and accept the terms and conditions by selecting **[I Agree]** and clicking **[Next]**.

9.



Choose an installation folder by clicking **[Browse]** or continue with the default settings by clicking **[Next]**.

10.	
	Confirm and start the installation by clicking [Next] .
11.	
	Click [Close] to finish the installation. Then exit the installer.
12.	If you are installing a camera-based system (e.g. Cam-aligner), continue to page 8 . If you are installing a spinning laser system (e.g. I-track II), continue to page 10 .




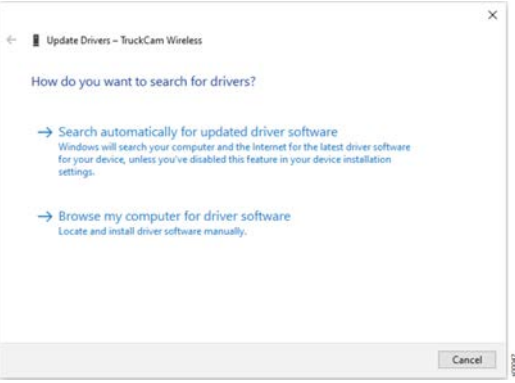
2 Installation of wireless server

Note: applies to camera-based wheel alignment systems only

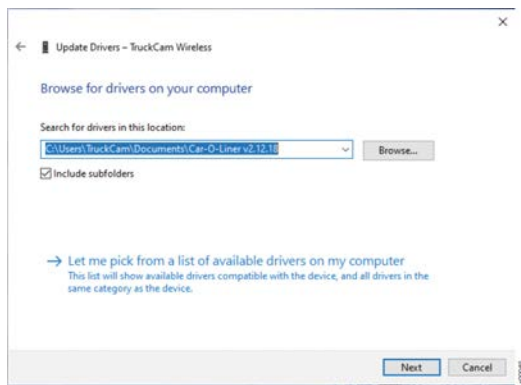
Plug the wireless server into a USB port, and Windows will find the server. If your computer is connected to the Internet, Windows Update will automatically install the device driver.

Otherwise Windows will tell you that the device driver was not installed correctly. In that case, please follow the steps described below.

Installing the server device driver manually

1.	Right-click on the Start button	
2.	Choose [Device manager]	
3.	 <p>In the Device Manager you will see the wireless unit displaying a question mark warning. Right-click on "TruckCam Wireless" and choose [Update driver software].</p>	
4.	 <p>Choose to browse your computer for the device driver software.</p>	

5.

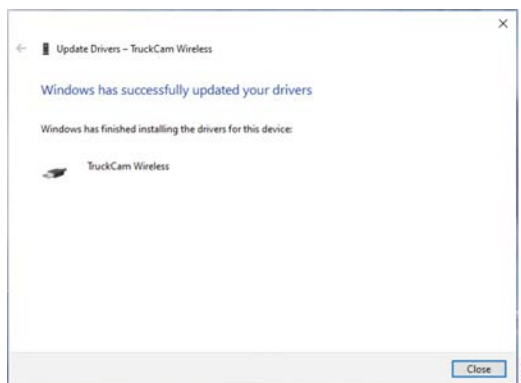


Specify a location by browsing to the driver location. Click **[Next]**.

6.

If you see a Windows warning regarding the driver installation, click **[Install this driver software anyway]**. The wireless server driver is perfectly Windows compatible and can be installed without risks.

7.



Click **[Close]** once the driver has been installed.



The TruckCam Wireless unit will now show up properly in the list of USB controllers.


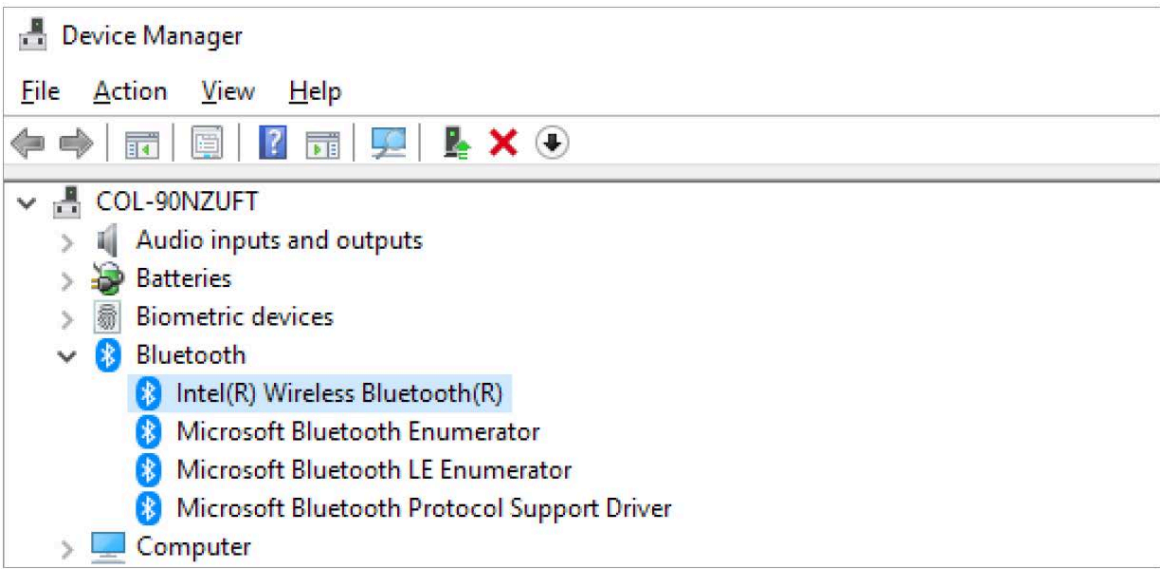
3 Choosing Bluetooth device

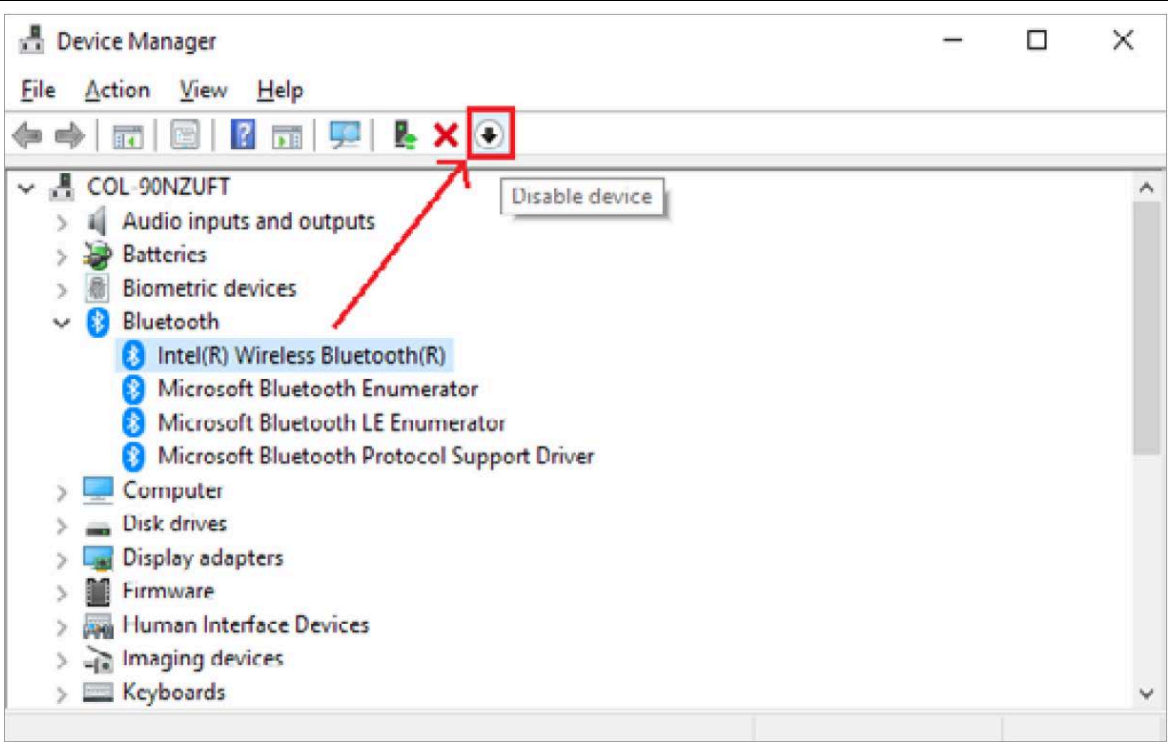
Note: applies to spinning laser wheel alignment systems only

The included Josam Bluetooth dongle is usually not needed if you are using a newer computer with a built-in Bluetooth device, version 4.0 (LE) or higher. In that case, proceed by launching Homebase.

For older computers with a built-in Bluetooth device, it is recommended to disable the internal Bluetooth and use the included Josam Bluetooth dongle. Follow the instructions below to disable the internal Bluetooth.

Disabling the internal Bluetooth device

1.	Right-click on the Start button , and choose [Device manager] .	
2.	<div data-bbox="263 672 1428 1243">  </div> <p>Expand the Bluetooth node. In this example we need to disable "Intel(R) Wireless Bluetooth".</p> <p><i>Note: the name(s) of the internal Bluetooth device(s) will differ from computer to computer. Generally speaking, you should disable all Bluetooth devices which do not contain the text "Microsoft Bluetooth" or "TDK Bluetooth".</i></p>	

3.	 <p>Select each Bluetooth device that should be disabled and click the [Disable device] button.</p>
4.	<p>After having removed the internal Bluetooth device(s), insert the Josam Bluetooth dongle and launch Homebase.</p>



JOSAM®

Car-O-Liner Group / JOSAM

Maskingatan 5

SE-702 86 Örebro, Sweden

Telefon: +46 19 30 40 00

info@josam.se

www.josam.se

This document is for general guidance only. Although every precaution has been taken in preparation of this document, the publisher assumes no responsibility for errors or omissions. Neither is any liability assumed for damages resulting from the use of the information contained herein. This document is not part of a contract or licence save insofar as may be expressly agreed. All items of technical information, advice, know-how, drawings, specifications and other similar items communicated in this document are confidential, and shall not be disclosed to a third party without prior written consent of the publisher

Josam is a trademark of Snap-on Incorporated. © 2025 Snap-on Incorporated.